

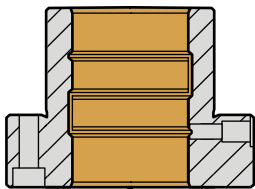
Sliding guides (steel with bronze coating, solid lubricant, solid lubricant rings)



STEINEL sliding guides (steel with bronze coating, solid lubricant and solid lubricant rings) are comprised of a guide pillar and a guide bush.

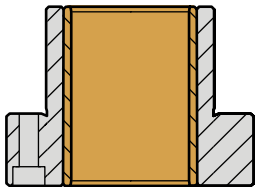
Sliding guides

Steel with bronze coating



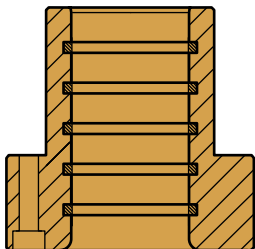
A bronze layer is galvanically applied to the running surfaces of the hardened steel guide bushes. The hard, extremely low-wear bronze layer is honed to the highest surface quality.

With solid lubricant



A solid lubricant bushing is integrated into the hardened steel body of the low-maintenance sliding guides. The solid lubricant used here forms an adherent, coherent lubricating film between the bush and guide pillar. This provides good dry-running properties.

With solid lubricant rings



The low-maintenance bronze guide bushes are equipped with solid lubricant rings; these create a lubricating film between the bush and guide pillar. In the case of strokes which are smaller than the distance between these rings, no dry-running properties are provided.

Quality criteria of STEINEL sliding guides

- Long life time and a high loading capacity – a choice of the best materials as well as high-precision machining guarantee the top quality of the guides.
- Large stroke – in comparison with roller guides, sliding guides enable strokes over the complete length of the guide pillar.
- High lateral forces possible – the forces are distributed over the bush surface
- Highest guide accuracy – highest processing precision ensures a minimal guide clearance. Upon request, this may be tailored to the customer's requirements for applications requiring a greater guide clearance.